

**Deloro Stellite Group**

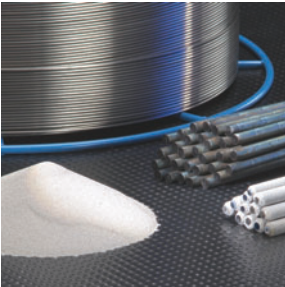




*Powder Metallurgy (PM) balls & seats.*



*High precision machining and polishing of orthopedic devices and components.*



*Cobalt and Nickel-based alloy wire, rod and powder.*



*Assembled components ready to be dipped; very precise internal geometry is realized with a ceramic core.*

*Front Cover, upper left: preheating of clusters before pouring, lower left: PTA weld overlay, right: rotating blade for industrial gas turbine.*

---

We have extensive materials know-how, particularly in Cobalt and Nickel-based alloys, along with comprehensive knowledge of a wide range of applications. The result is an unparalleled capability to select the most appropriate solution to meet our customer's wear resistance needs.

---



## Deloro Stellite Expertise

Deloro Stellite is a global provider of innovative solutions to challenging wear problems. Our specialist products and manufacturing services help extend the life of components in demanding environments where heat, corrosion and abrasion limit their life.

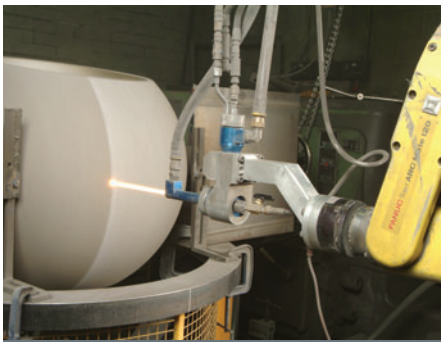
We have extensive materials know-how, particularly in Cobalt and Nickel-based alloys, along with comprehensive knowledge of a wide range of applications. The result is an unparalleled capability to select the most appropriate solution to meet our customer's wear resistance needs. Our unique ability to integrate manufacturing processes, combined with our advanced problem-solving skills, enables us to create total solutions ranging from customised alloys to full assembly of complete components and the design of application equipment. Deloro Stellite's quality assurance and production control programs meet the most demanding industry specifications. For more than 100 years, our reputation for excellence, dependability and innovation have been unrivalled.

Whether we are working to very tight specifications, manufacturing complex parts or providing customised materials, we understand our customers' businesses and deliver solutions that bring them the very best results.

---

For more than 100 years, our reputation for excellence, dependability and innovation have been unrivalled.

---



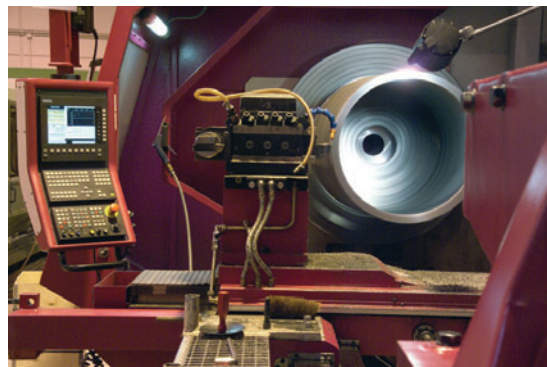
*JetKote® High Velocity Oxy-Fuel spraying of 42" diameter ball valve.*



*Advanced quality assurance and materials analysis.*

### Our Resources

- Unique range of wear-resistant alloys
- Versatile team of people
- Flexible production facilities
- Global presence
- In-depth industry knowledge
- Application database



*CNC turning equipment used for large components: decades of experience and detailed know-how result in the highest levels of quality.*

### Our Expertise

- Extensive materials 'know-how'
- Comprehensive process knowledge
- Expert materials and process selection
- Process integration
- Problem-solving capability
- Quality assurance

## Our Offering: Critical Wear Solutions

The excellent properties of our alloys guarantee reliable resistance to corrosion, high temperatures and mechanical wear.

We work closely with our customers to understand their wear needs, allowing us to select the optimal process and materials to suit the size, complexity and design requirements of each wear problem.



*Cast orthopedic component: ground, polished and laser marked.*

### Wear-Resistant Customised Components

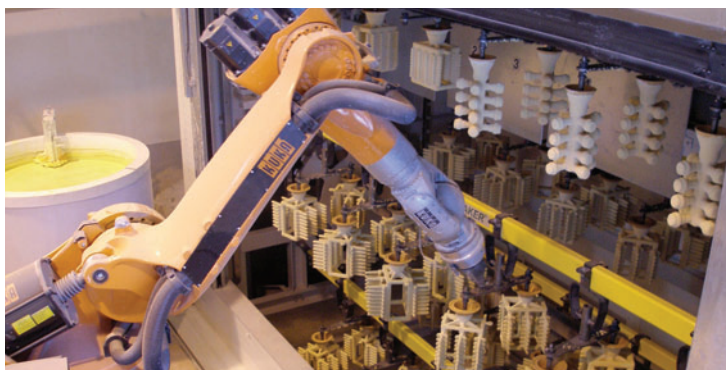
- Full range of casting processes: sand casting, centrifugal casting, investment casting, resin shell casting, and precision equiaxed castings for high performance parts
- Powder metallurgy and wrought products
- Overlays onto solid components for additional wear resistance
- Full assembly of complete components
- Machining and polishing of hard alloys to close dimensional tolerances and tight surface finish specifications
- Prototyping and rapid product development

### Wear-Resistant Coatings

- Variety of coating processes available within our network of facilities: JetKote® HVOF, DuraStell™ Welded Overlays, Plasma Transferred Arc (PTA) Weld Deposition, Spray & Fuse and Powder Welding, Tungsten Inert Gas (TIG) Welding (aka Gas Tungsten Arc Welding or GTAW), Oxy-Acetylene Welding, Manual Metal Arc (MMA) Weld Deposition, Submerged Arc Welding and Metal Inert Gas (MIG) Weld Deposition

### Wear-Resistant Materials

- High quality Cobalt and Nickel-based alloy welding powder, rod, wire and electrodes in a full range of sizes and specifications
- The world's leading brands of equipment for the application of wear coatings: Jet Kote® HVOF, Starweld® & Hettiger™ Plasma Transferred Arc (PTA)



*Robot and drying chamber for investment cast components. Excellent mould design allows for ideal structural conditions and outstanding wear resistance of components.*

---

The excellent properties of our alloys guarantee reliable resistance to corrosion, high temperatures and mechanical wear.

---

## The Deloro Stellite Approach

Deloro Stellite prides itself in working with customers to develop the most effective ways to solve their demanding wear challenges. This may be by providing advanced wear-resistant materials, or by creating customised solid or coated components. In each case we apply our knowledge to develop a unique solution for each wear situation. Our experience with a wide range of processes, and our ability to seamlessly integrate these processes means that we can provide customers with a true 'one-stop-shop' for their wear solutions.

Our depth and breadth of expertise means that we can provide a 360° wear consulting service, covering engineering support, design assistance and failure analysis.

The Deloro Stellite Group brings together a wealth of experience in wear resistance. Our production facilities, located throughout the world, specialise in a range of different manufacturing processes, supported by state-of-the-art technological, scientific and R&D services. This network of resources means that customers can access our expertise wherever they operate.

---

Deloro Stellite prides itself in working with customers to develop the most effective ways to solve their demanding wear challenges.

---

## Industries Served



- Oil & Gas
- Chemical & Petrochemical
- Plastics & Rubber
- Food
- Glass



- Aerospace
- Transportation
- Defense
- Medical
- Dental



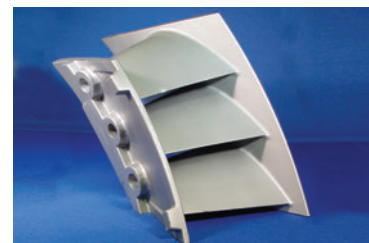
- Power Generation
- Iron & Steel
- Construction & Mining Machinery
- Timber
- Pulp & Paper



*Investment cast parts for down-hole oil and gas exploration operations.*



*PMA bearing support using equiaxial technology.*



*Three blade nozzle section for industrial gas turbine.*

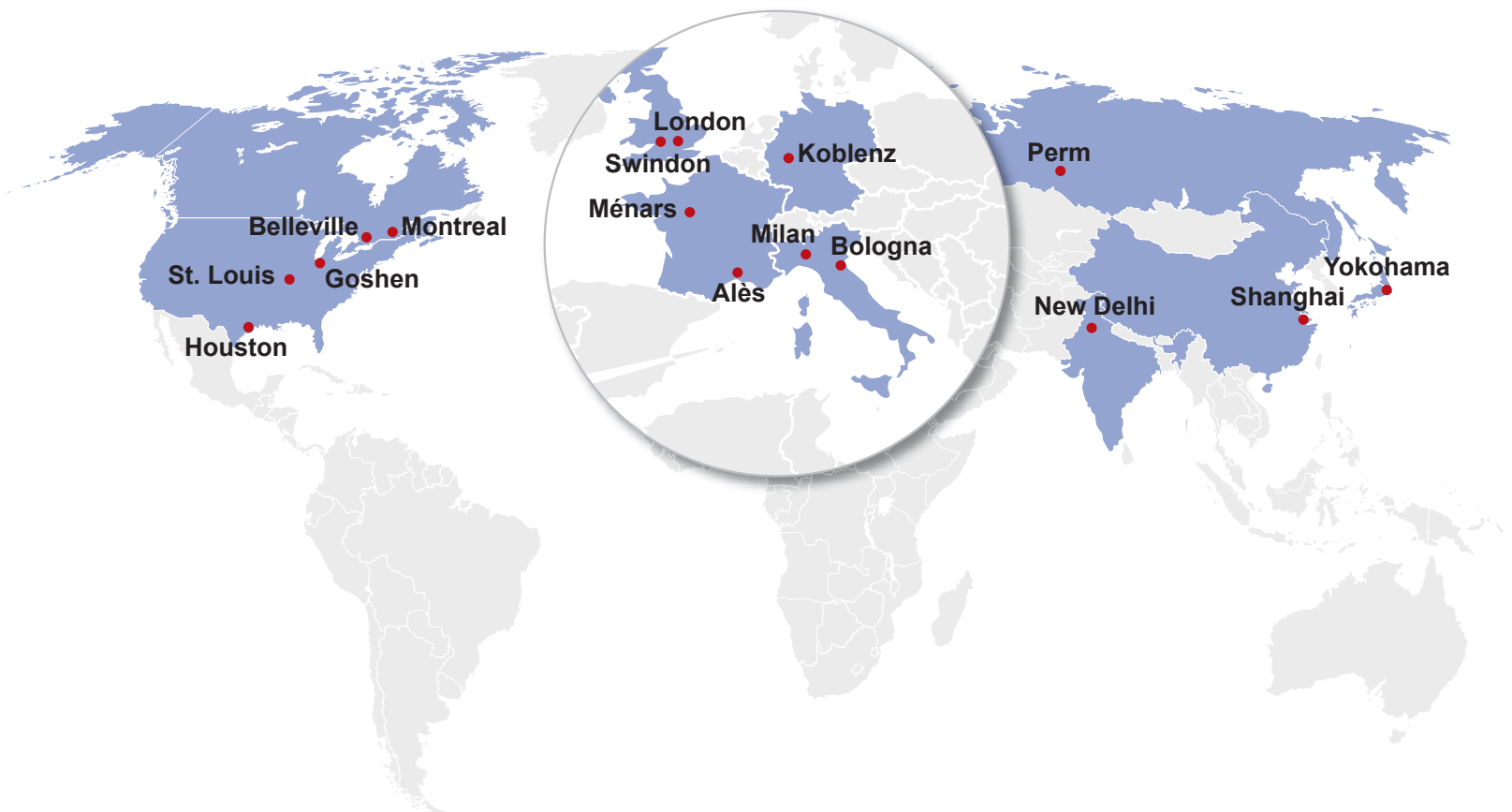
### **The Deloro Stellite Difference**

**Excellence.** This applies to products, services, staff knowledge and training. Deloro Stellite is committed to getting the best results. We believe that there are always opportunities to do things better, so we have established processes that drive continuous improvement throughout all of our facilities.

**Dependability.** We work with our clients to ensure workable and realistic solutions that are more reliable and help make our customers more efficient. We apply our knowledge to understand our customers' businesses and deliver solutions that will bring them the best results.

**Innovation.** Deloro Stellite is constantly striving for innovative developments that result in better products and services for our customers. Our experts listen to customers, then apply their many years of experience with the latest technologies to develop patented solutions.

## **Our Global Presence**



[www.stellite.com](http://www.stellite.com)

*Back cover images from left to right: turbine engine, rasp, food industry components, High Velocity Oxy-Fuel Spray.*

The trademarks Stellite®, Deloro Stellite with Star design®, JetKote® and Starweld® are registered trademarks of Deloro Stellite Holdings Corporation; DuraStell™ and Hettiger™ are trademarks of Deloro Stellite Holdings Corporation, and none may be used without express written permission.

**Deloro  
Stellite**





Deloro  
**Stellite**

